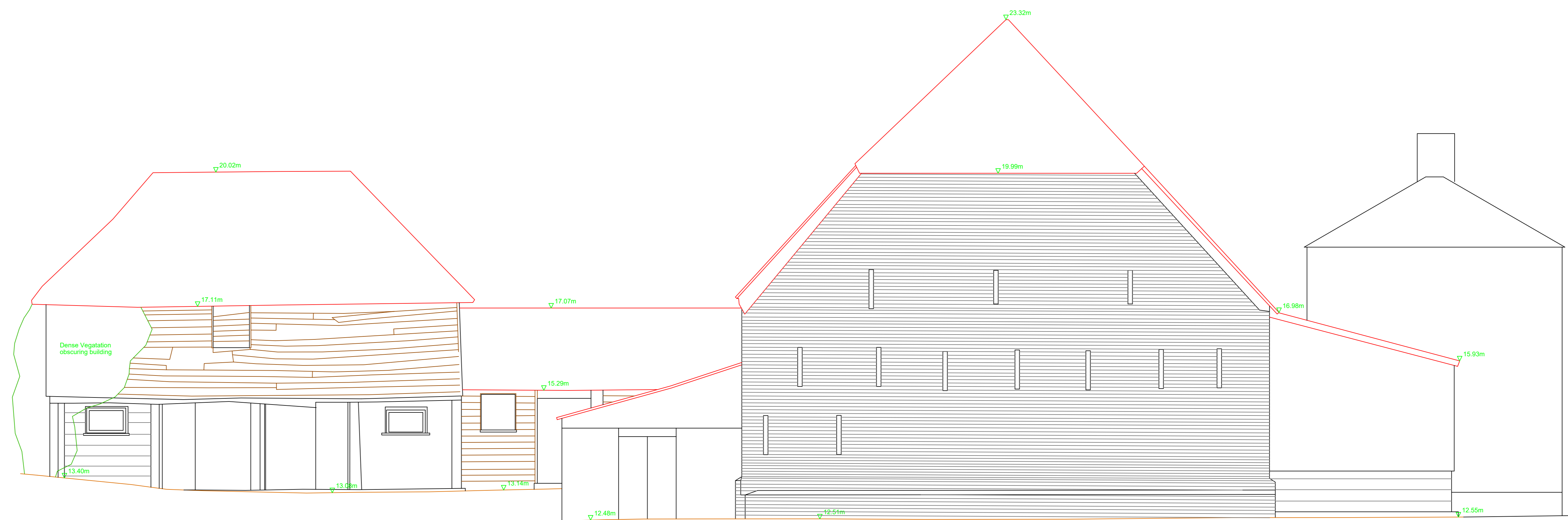
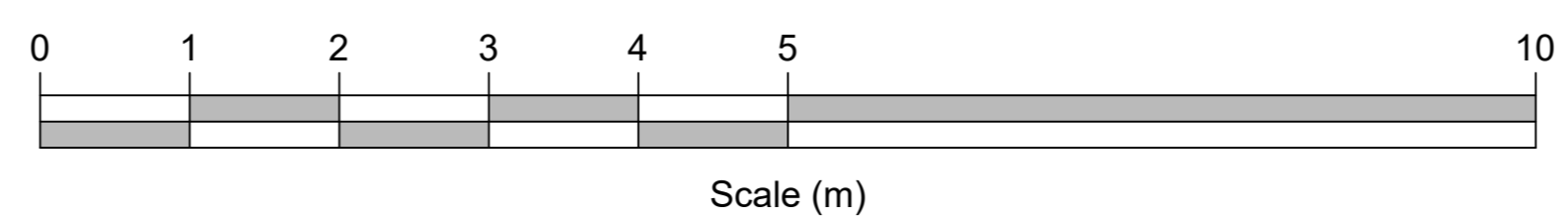


10.000m AOD
Elevation 1



10.000m AOD
Elevation 2

LEGEND

- ACL Arch Corner Level / Height above Floor
- ASL Arch Spring Level / Height above Floor
- CVL Window C/L to Window Head Dimension
- CLL Ceiling Level / Height above Floor
- DL Door Head Level / Height above Floor
- DLH Door Head Level / Height above Floor
- F.C Floor to Window C/L Dimension
- FL Floor Level
- RL Rafter Top
- SCGL Suspended / Frame Ceiling Level / Height above Floor
- SL Sill Level
- TL Threshold Level
- THL Truncated Height above Floor
- TLL Top of Wall Level
- ULS Underside of Slope / Height to underside above Floor
- USL Underside of Joint Level / Height to underside above Floor
- WALL Window Arch Spring Level
- WCL Window C/L Level
- WHL Window Head Level
- Sloping Roof
- (Sloped Ceiling Points up)
- (Arched / Vaulted Ceiling)
- Building Line / Wall Line
- Detail / Dress
- Chimney Detail
- Partials
- Ceiling

NOTES

All levels are related to the Ordnance Survey national grid by means of GPS using the Leica SmartWorm 57K receiver.

All dimensions are in meters.

Do not scale from this drawing.

Roofing and building has not been measured where the wall line and roof.

All measurements are given to reading (third or fourth) and rounded up and reported as average.

All window head and window c/l levels are internal measurements.

Ceiling height measurements are taken to a point which best represents the general room height.



Drawing Revisions

Rev No.	Date	Details
1	25.05.18	Additional info added

OMEGA GEOMATICS

Specialist Geospatial Surveyors

Unit 5 Houth Business Centre
Houth Lane
Gillingham
Kent ME13 8BF

Tel: +44 (0)1634 751 002
Web: www.OmegaGeo.co.uk
Enquiries: survey@OmegaGeo.co.uk

CLIENT
SHEPHERD NEAME

PROJECT
QUEEN COURT FARM BARN
WATER LANE, OSPRINGE,
FAVERSHAM, KENT, ME13 8UA

TITLE
ELEVATIONS & SECTIONS

ORIGINAL SURVEY DATE
JULY 2018

SCALE
1:50 @ A0 DWG. No. 1 OF 7

JOB Ref. 18-0493 CAD FILE ELEV_02

© Omega Geomatics Ltd
This drawing and any intellectual property within it remain the property of Omega Geomatics Ltd and should not be copied or passed to any third party without prior consent from Omega Geomatics Ltd.